

# **GADSDEN ALABAMA URBANIZED AREA**

## **REVISIONS TO THE STORM WATER MANAGEMENT PROGRAM**

Gadsden Alabama Urbanized Area  
Phase II Small MS4  
NPDES General Permit ALR040009

May 28, 2013

Prepared By:



S&ME, Inc.  
399 Executive Drive  
Huntsville, Alabama 35816  
Phone (256) 837-8882  
Fax (256) 837-6931

S&ME Project No. 1824-13-021

## TABLE OF CONTENTS

<b>1. INTRODUCTION .....</b>	<b>3</b>
1.1 Responsible Party.....	3
1.2 Revisions to the Storm Water Management Program.....	3
<b>2. MONITORING.....</b>	<b>4</b>
2.1 Monitoring Locations.....	4
<b>3. CITY OF GADSDEN .....</b>	<b>6</b>
3.1 Revisions to Public Education and Outreach Strategies .....	6
3.2 Agency Certification .....	6
<b>4. RAINBOW CITY .....</b>	<b>7</b>
4.1 Revisions to Public Education and Outreach Strategies .....	7
4.2 Agency Certification .....	7
<b>5. REECE CITY.....</b>	<b>8</b>
5.1 Revisions to Public Education and Outreach Strategies .....	8
5.2 Revisions to Construction Site Storm Water Runoff Strategies .....	8
5.3 Agency Certification .....	9
<b>6. CITY OF SOUTHSIDE .....</b>	<b>10</b>
6.1 Revisions to Public Education and Outreach Strategies .....	10
6.2 Revisions to Illicit Discharge Detection and Elimination Strategies .....	10
6.3 Agency Certification .....	10
<b>7. CITY OF GLENCOE.....</b>	<b>11</b>
7.1 Revisions to Public Education and Outreach Strategies .....	11
7.2 Revisions to Illicit Discharge Detection and Elimination Strategies .....	11
7.3 Agency Certification .....	12
<b>8. CITY OF HOKES BLUFF .....</b>	<b>13</b>
8.1 Revisions to Public Education and Outreach Strategies .....	13
8.2 Agency Certification .....	13
<b>9. CITY OF ATTALLA .....</b>	<b>14</b>
9.1 Revisions to Public Education and Outreach Strategies .....	14
9.2 Revisions to Construction Site Storm Water Runoff Strategies .....	14
9.3 Agency Certification .....	15
<b>10. ETOWAH COUNTY.....</b>	<b>16</b>
10.1 Revisions to Illicit Discharge Detection and Elimination Strategies .....	16
10.2 Agency Certification .....	16

## Appendix A – Monitoring Relocation Maps

## 1. INTRODUCTION

S&ME, Inc. has prepared this report of Revisions to the Storm Water Management Program (SWMP) for the *Gadsden, Alabama Urbanized Area* Phase II small MS4 in accordance with S&ME Proposal No. 12-243 REVISED, dated November 29, 2012 and authorized by Mr. Jeramy Ward of the City of Gadsden, Alabama on January 24, 2013. The urbanized area consists of the following entities (jurisdictions): The City of Gadsden, Rainbow City, Reece City, City of Southside, City of Glencoe, City of Hokes Bluff, City of Attalla, and portions of unincorporated Etowah County.

Submittal of revisions to the SWMP to the Alabama Department of Environmental Management (ADEM) is required by Part IV.B.2 of National Pollutant Discharge Elimination System (NPDES) General Permit ALR040009 for discharges from regulated small municipal separate storm sewer systems (MS4), issued to the *Gadsden, Alabama Urbanized Area* by the ADEM.

### 1.1 Responsible Party

The Storm Water Steering Committee is responsible for the coordination and implementation of the Storm Water Management Plan. Current membership of the Storm Water Steering Committee is as follows:

**Table 1. MS4 Storm Water Steering Committee – March 2013**

ENTITY	CONTACT	PHONE NO.	EMAIL
City of Gadsden	Jeramy Ward	256-549-4527	jward@cityofgadsden.com
City of Gadsden	Chad Hare	256-549-4520	chare@cityofgadsden.com
City of Attalla	Jason Nicholson	256-441-9200	j.nicholson@attallacity.com
City of Rainbow City	Heath Williamson	256-413-1240	heathw@rbcAlabama.com
City of Southside	Jimmy Whittemore	256-442-9775 Ext. 103	jwhittemore@cityofsouthside.com
Town of Reece City	Randall Scott	256-538-6521	rcityclerk@comcast.net
City of Glencoe	Charles Gilchrist	256-492-1424	
City of Glencoe	Bobbi Noah	256-492-1424	bobbinoah@cityofglencoe.net
City of Hokes Bluff	Gary Reeves	256-492-2414	mayorreeves@bellsouth.net
City of Hokes Bluff	Lisa Johnson	256-492-2414	hbcity@cityofhokesbluff.net
Etowah County	Tim Graves	256-549-5358	tgraves@etowahcounty.org

### 1.2 Revisions to the Storm Water Management Program

As stated in Part IV.B.2 of NPDES General Permit ALR040009, unless denied by ADEM, the proposed revisions shall be deemed approved and implemented within 60 days of the request. S&ME presented the requested revisions pertaining to Control Measures for each entity in the

Annual Report dated March 28, 2013 and again in this report. Additionally, S&ME is presenting revisions to eleven (11) of the monitoring point locations.

## **2. MONITORING**

### **2.1 Monitoring Locations**

Eighteen primary monitoring locations were identified in the 2012 SWMP for determining compliance of the Gadsden-Etowah MS4 with the 2008 TMDL for phosphorous. The locations were selected along the river at points determined to be representative of the typical land uses in the subwatersheds.

Prior to the first round of sampling in March 2013, several monitoring points were relocated due to problems with access. The revised coordinates are included in Table 2. Specific details regarding each monitoring point location are presented below.

1. **HB 3** - To allow for sampling from a boat, monitoring point HB 3 was relocated 0.34 mile southwest. The revised location also accounts for additional watershed area.
2. **SME 3** - To allow for sampling from a boat, monitoring point SME 3 was relocated 0.39 mile northwest to where Coal Creek enters Neely Henry Lake.
3. **GD 3** - Due to access difficulties, monitoring point GD 3 was relocated approximately 1.55 miles east. This location also better characterizes discharges from the development along Tidmore Street.
4. **GD 7** - Based on input from the City of Gadsden Water Works, monitoring point GD 7 was relocated approximately 0.17 mile southwest, from Broad Street to Walnut Street. The revised location is near an outfall from the downtown Gadsden storm sewer directly to Neely Henry Lake.
5. **CO 15** - Due to access difficulties, monitoring point CO 15 was relocated approximately 0.35 mile north.
6. **CO 14** - Due to access difficulties, monitoring point CO 14 was relocated 0.15 mile northeast.
7. **GD 12** - Due to low stream flow, monitoring point GD 12 was relocated 0.11 mile northwest to an unnamed tributary of Neely Henry Lake that has a larger contributing watershed with similar land use.

8. **SS 5** - To allow for sampling from a boat, monitoring point SS 5 was relocated 0.36 mile north.
9. **RC 2** - Due to access difficulties, monitoring point RC 2 was relocated 0.50 mile west upstream in Horton Creek.
10. **SS 14** - Due to access difficulties, monitoring point SS 14 was relocated 0.32 mile east.
11. **RC 14** - Monitoring point RC 14 was relocated 0.89 mile south to allow for sampling from a boat. The revised location also monitors discharges from Rook Creek and another unnamed tributary to the Coosa.

The locations of monitoring points GD 5, GD 6, SME 2, SME 1, GD 8, AT 5, and SS 13 were either not changed or relocated within 350 feet of the original point for ease of access.

The revised primary monitoring locations are listed in Table 2 below. Two rounds of quarterly monitoring have been completed as of May 21, 2013 using the listed coordinates.

**Table 2. Monitoring Point Coordinates**

OUTFALL ID	LATITUDE	LONGITUDE	ACCESS	WATERBODY EVALUATED
AT 5	34.006446°	-86.069061°	LAND	Big Wills Creek
GD 8	33.999535°	-86.024463°	LAND	Black Creek
RC 2	33.967683°	-86.039476°	LAND	Horton Creek
SS 13	33.891352°	-86.049229°	LAND	Neely Henry Lake
SS 14	33.885921°	-86.030683°	LAND	U.T. to Neely Henry Lake
GD 12	33.952567°	-86.003495°	LAND	U.T. to Neely Henry Lake
CO 14	33.940904°	-85.967704°	LAND	U.T. to Neely Henry Lake
SME 2	34.002461°	-86.001571°	LAND	U.T. to Coosa River
GD 7	34.008361°	-85.999777°	BOAT	Storm sewer outfall to Coosa River
GD 6	34.015350°	-85.995617°	LAND	Town Creek
CO 15	33.972280°	-85.965354°	LAND	U.T. to Neely Henry Lake
RC 14	33.905786°	-86.111656°	BOAT	Rook Creek / Dry Creek / Coosa River
SS 5	33.941329°	-86.021569°	BOAT	U.T. to Coosa River
SME 1	33.990184°	-86.004048°	BOAT	Big Wills Creek / Black Creek
GD 5	34.014324°	-85.924013°	BOAT	Cove Creek
GD 3	34.012380°	-85.953651°	BOAT	U.T. to Neely Henry Lake
SME 3	34.009698°	-85.956230°	BOAT	Coal Creek
HB 3	34.002129°	-85.882808°	BOAT	U.T. to Neely Henry Lake

### **3. CITY OF GADSDEN**

The City of Gadsden requests no revisions to the Control Measure strategies identified in the 2012 SWMP, with the exception of the Public Education and Outreach strategy described below.


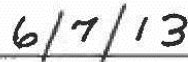
#### **3.1 Revisions to Public Education and Outreach Strategies**

1. The 2012 SWMP proposed an initial target of 30,000 hits for the Storm Water web page during the 2012 to 2013 reporting period. The City of Gadsden wishes to revise the projected number of hits to **500** for the 2013 to 2014 reporting period.

The Storm Water web page is currently live, but has little content. The City is developing additional information for the web page and intends to advertise the address in the hardcopy educational materials provided to the public and in the public service announcements. As the page develops and as advertising improves, the City expects more visitors to the page, but a target of 30,000 hits does not appear reasonable at this time.

#### **3.2 Agency Certification**

I certify under penalty of law that this document and all attachments pertaining to the City of Gadsden were prepared under my directions or supervision in accordance with a system designed to assure that qualified personnel properly gathered and evaluated the information submitted. Based on my inquiry of the person or persons who manage the system or those persons directly responsible for gathering the information, the information submitted is, to the best of my knowledge and belief, true, accurate, and complete. I am aware that there are significant penalties for submitting false information including the possibility of fine or imprisonment for knowing violations.

 _____ Sherman Guyton, Mayor City of Gadsden, Alabama	 _____ Date
---	--

## 4. RAINBOW CITY

Rainbow City requests no revisions to the Control Measure strategies identified in the 2012 SWMP, with the exception of the Public Education and Outreach strategy described below.

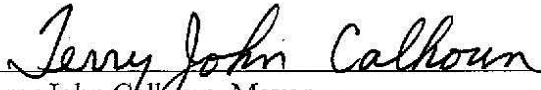
### 4.1 Revisions to Public Education and Outreach Strategies

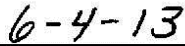
1. The 2012 SWMP proposed an initial target of 20,000 hits for the Storm Water web page during the 2012 to 2013 reporting period. Since the page went online on October 9, 2012, it has recorded 127 visitors. Rainbow City wishes to revise the projected number of hits to **100** for the 2013 to 2014 reporting period.

The Storm Water web page is currently live, but has little content. The City is developing additional information for the web page and intends to advertise the address in the hardcopy educational materials provided to the public. As the page develops and as advertising improves, the City expects more visitors to the page, but a target of 20,000 hits does not appear reasonable at this time.

### 4.2 Agency Certification

I certify under penalty of law that this document and all attachments pertaining to Rainbow City were prepared under my directions or supervision in accordance with a system designed to assure that qualified personnel properly gathered and evaluated the information submitted. Based on my inquiry of the person or persons who manage the system or those persons directly responsible for gathering the information, the information submitted is, to the best of my knowledge and belief, true, accurate, and complete. I am aware that there are significant penalties for submitting false information including the possibility of fine or imprisonment for knowing violations.

  
\_\_\_\_\_  
Terry John Calhoun, Mayor  
Rainbow City, Alabama

  
\_\_\_\_\_  
Date

## **5. REECE CITY**

Reece City requests no revisions to the Control Measure strategies identified in the 2012 SWMP, with the exception of the Public Education and Outreach and Construction Site Storm Water Runoff strategies described below.

Additionally, the 2012 SWMP proposed that consulting firm Jones, Blair, Waldrup, and Tucker, Inc. would be responsible for the City's tracking participation in all control measures. Reece City is assuming that responsibility from this point forward.

### **5.1 Revisions to Public Education and Outreach Strategies**

1. The 2012 SWMP proposed the inclusion of educational materials with the water/sewer bills. Reece City wishes to revise this strategy by making these materials available at City Hall. The water/sewer bills are mail-out postcards. The cards have limited space for writing and no way to include additional pages.

The City will use the bills to publish three-line sentences throughout the year advertising event information and storm water education. The City will also develop educational materials and make them available to the public at the City Hall.

### **5.2 Revisions to Construction Site Storm Water Runoff Strategies**

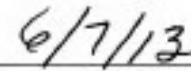
1. The 2012 SWMP required Reece City to establish a construction site inspection program under which designated City personnel and/or consultants would conduct the required inspections. Due to limited City resources and qualified personnel, Reece City is currently proposing to retain the services of a Consulting Engineer to establish a construction site inspection program and perform the required construction site inspections.



### 5.3 Agency Certification

I certify under penalty of law that this document and all attachments pertaining to Reece City were prepared under my directions or supervision in accordance with a system designed to assure that qualified personnel properly gathered and evaluated the information submitted. Based on my inquiry of the person or persons who manage the system or those persons directly responsible for gathering the information, the information submitted is, to the best of my knowledge and belief, true, accurate, and complete. I am aware that there are significant penalties for submitting false information including the possibility of fine or imprisonment for knowing violations.

  
\_\_\_\_\_  
Randall Scott, Mayor  
Reece City, Alabama

  
\_\_\_\_\_  
Date

## 6. CITY OF SOUTHSIDE

The City of Southside requests no revisions to the Control Measure strategies identified in the 2012 SWMP, with the exception of the Public Education and Outreach and Illicit Discharge Detection and Elimination strategies described below.

### 6.1 Revisions to Public Education and Outreach Strategies

1. The 2012 SWMP proposed an initial target of 5,000 hits for the Storm Water web page during the 2012 to 2013 reporting period. The City of Southside wishes to revise the projected number of hits to **100** for the 2013 to 2014 reporting period.

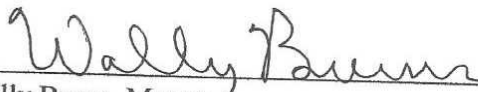
The City is developing additional information for the web page and intends to advertise the address in the hardcopy educational materials provided to the public and in the public service announcements. As the page develops and as advertising improves, the City expects more visitors to the page, but a target of 5,000 hits does not appear reasonable at this time.

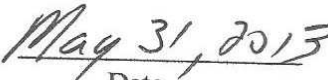
### 6.2 Revisions to Illicit Discharge Detection and Elimination Strategies

1. The 2012 SWMP stated the City would distribute educational materials highlighting identification and reporting of potential illicit discharges through inclusion in water and garbage collection bills. Due to lack of funds, it is not feasible for the City to include this information in water and garbage collection bills at this time. The City will instead make the educational materials available to the public at the City Hall and Community Center.

### 6.3 Agency Certification

I certify under penalty of law that this document and all attachments pertaining to the City of Southside were prepared under my directions or supervision in accordance with a system designed to assure that qualified personnel properly gathered and evaluated the information submitted. Based on my inquiry of the person or persons who manage the system or those persons directly responsible for gathering the information, the information submitted is, to the best of my knowledge and belief, true, accurate, and complete. I am aware that there are significant penalties for submitting false information including the possibility of fine or imprisonment for knowing violations.

  
\_\_\_\_\_  
Wally Burns, Mayor  
City of Southside, Alabama

  
\_\_\_\_\_  
Date

## **7. CITY OF GLENCOE**

The City of Glencoe requests no revisions to the Control Measure strategies identified in the 2012 SWMP, with the exception of the Public Education and Outreach and Illicit Discharge Detection and Elimination strategies described below.

### **7.1 Revisions to Public Education and Outreach Strategies**

1. The 2012 SWMP proposed to include educational materials with the water/sewer bills during the 2012 to 2013 reporting period. The City does not have the capability to include educational material with the water/sewer bills. The City proposes to provide educational material for the public at the Building Department and the Library and on the Storm Water web page.
2. The 2012 SWMP proposed an initial target of 5,000 hits for the Storm Water web page during the 2012 to 2013 reporting period. The City of Glencoe wishes to revise the projected number of hits to **100** for the 2013 to 2014 reporting period.

The storm water web page is currently live, but has little content. The City is developing additional information for the web page and intends to advertise the address in the hardcopy educational materials provided to the public. As the page develops and as advertising improves, the City expects more visitors to the page, but a target of 5,000 hits does not appear reasonable at this time.

### **7.2 Revisions to Illicit Discharge Detection and Elimination Strategies**

1. The 2012 SWMP proposed to include educational materials with the water/sewer bills during the 2012 to 2013 reporting period. The City does not have the capability to include educational material with the water/sewer bills. The City proposes to provide educational materials for the public at the Building Department, at the Library, and on the Storm Water web page.

### 7.3 Agency Certification

I certify under penalty of law that this document and all attachments pertaining to the City of Glencoe were prepared under my directions or supervision in accordance with a system designed to assure that qualified personnel properly gathered and evaluated the information submitted. Based on my inquiry of the person or persons who manage the system or those persons directly responsible for gathering the information, the information submitted is, to the best of my knowledge and belief, true, accurate, and complete. I am aware that there are significant penalties for submitting false information including the possibility of fine or imprisonment for knowing violations.



Charles Gilchrist, Mayor  
City of Glencoe, Alabama



Date

## **8. CITY OF HOKES BLUFF**

The City of Hokes Bluff requests no revisions to the Control Measure strategies identified in the 2012 SWMP, with the exception of the Public Education and Outreach strategy described below.

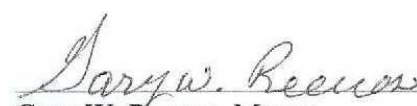
### **8.1 Revisions to Public Education and Outreach Strategies**

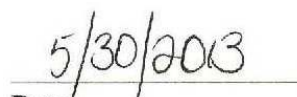
1. The 2012 SWMP proposed an initial target of 2,500 hits for the Storm Water web page during the 2012 to 2013 reporting period. The City of Hokes Bluff wishes to revise the projected number of hits to **500** for the 2013 to 2014 reporting period.

The storm water web page is currently in development and is expected to go live by July 31, 2013. The City is developing additional information for the web page and intends to advertise the address in the hardcopy educational materials provided to the public. As the page develops and as advertising improves, the City expects more visitors to the page, but a target of 2,500 hits does not appear reasonable at this time.

### **8.2 Agency Certification**

I certify under penalty of law that this document and all attachments pertaining to the City of Hokes Bluff were prepared under my directions or supervision in accordance with a system designed to assure that qualified personnel properly gathered and evaluated the information submitted. Based on my inquiry of the person or persons who manage the system or those persons directly responsible for gathering the information, the information submitted is, to the best of my knowledge and belief, true, accurate, and complete. I am aware that there are significant penalties for submitting false information including the possibility of fine or imprisonment for knowing violations.

  
\_\_\_\_\_  
Gary W. Reeves, Mayor  
City of Hokes Bluff, Alabama

  
\_\_\_\_\_  
Date

## **9. CITY OF ATTALLA**

The City of Attalla requests no revisions to the Control Measure strategies identified in the 2012 SWMP, with the exception of the Public Education and Outreach and Construction Site Storm Water Runoff strategies described below.

Additionally, the 2012 SWMP proposed that consulting firm Jones, Blair, Waldrup, and Tucker, Inc. would be responsible for tracking the City's participation in the control measures. The City of Attalla is assuming that responsibility from this point forward.

### **9.1 Revisions to Public Education and Outreach Strategies**

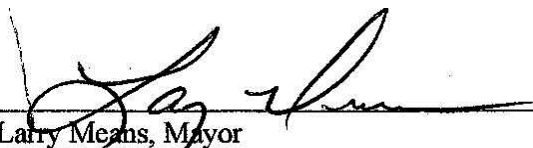
1. The 2012 SWMP proposed an initial target of 1,500 hits for the Storm Water web page during the 2012 to 2013 reporting period. The City of Attalla wishes to revise the projected number of hits to **100** for the 2013 to 2014 reporting period. The City plans to develop the web page during the upcoming reporting period, 1,500 hits does not appear reasonable at this time.
2. The 2012 SWMP proposed to include educational materials with the garbage collection bills during the 2012 to 2013 reporting period. The City does not have the capability to include educational material with the garbage collection bills. The City proposes to provide educational material for the public at the City Hall and the Library.

### **9.2 Revisions to Construction Site Storm Water Runoff Strategies**

1. The 2012 SWMP proposed that the City of Attalla would retain the services of a Consulting Engineer to perform plan review; however, the City created a City Engineer position and hired an Engineer in December 2012. Plan review is now the City Engineer's responsibility.

### 9.3 Agency Certification

I certify under penalty of law that this document and all attachments pertaining to the City of Attalla were prepared under my directions or supervision in accordance with a system designed to assure that qualified personnel properly gathered and evaluated the information submitted. Based on my inquiry of the person or persons who manage the system or those persons directly responsible for gathering the information, the information submitted is, to the best of my knowledge and belief, true, accurate, and complete. I am aware that there are significant penalties for submitting false information including the possibility of fine or imprisonment for knowing violations.

  
\_\_\_\_\_  
Larry Means, Mayor  
City of Attalla, Alabama

  
\_\_\_\_\_  
Date

## 10. ETOWAH COUNTY

Etowah County requests no revisions to the Control Measure strategies identified in the 2012 SWMP, with the exception of the Illicit Discharge Detection and Elimination strategy described below.

### 10.1 Revisions to Illicit Discharge Detection and Elimination Strategies

1. The 2012 SWMP required that Etowah County modify their existing storm water and subdivision regulations to address illicit discharge detection and elimination. Due to state law, the County is currently unable to address illicit discharges outside of the Subdivision Regulations.

### 10.2 Agency Certification

I certify under penalty of law that this document and all attachments pertaining to the unincorporated portions of Etowah County were prepared under my directions or supervision in accordance with a system designed to assure that qualified personnel properly gathered and evaluated the information submitted. Based on my inquiry of the person or persons who manage the system or those persons directly responsible for gathering the information, the information submitted is, to the best of my knowledge and belief, true, accurate, and complete. I am aware that there are significant penalties for submitting false information including the possibility of fine or imprisonment for knowing violations.



Signature of Etowah County Responsible Official



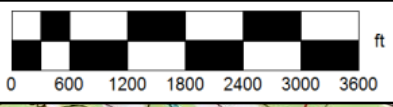
Date

Tim Graves, County Engineer

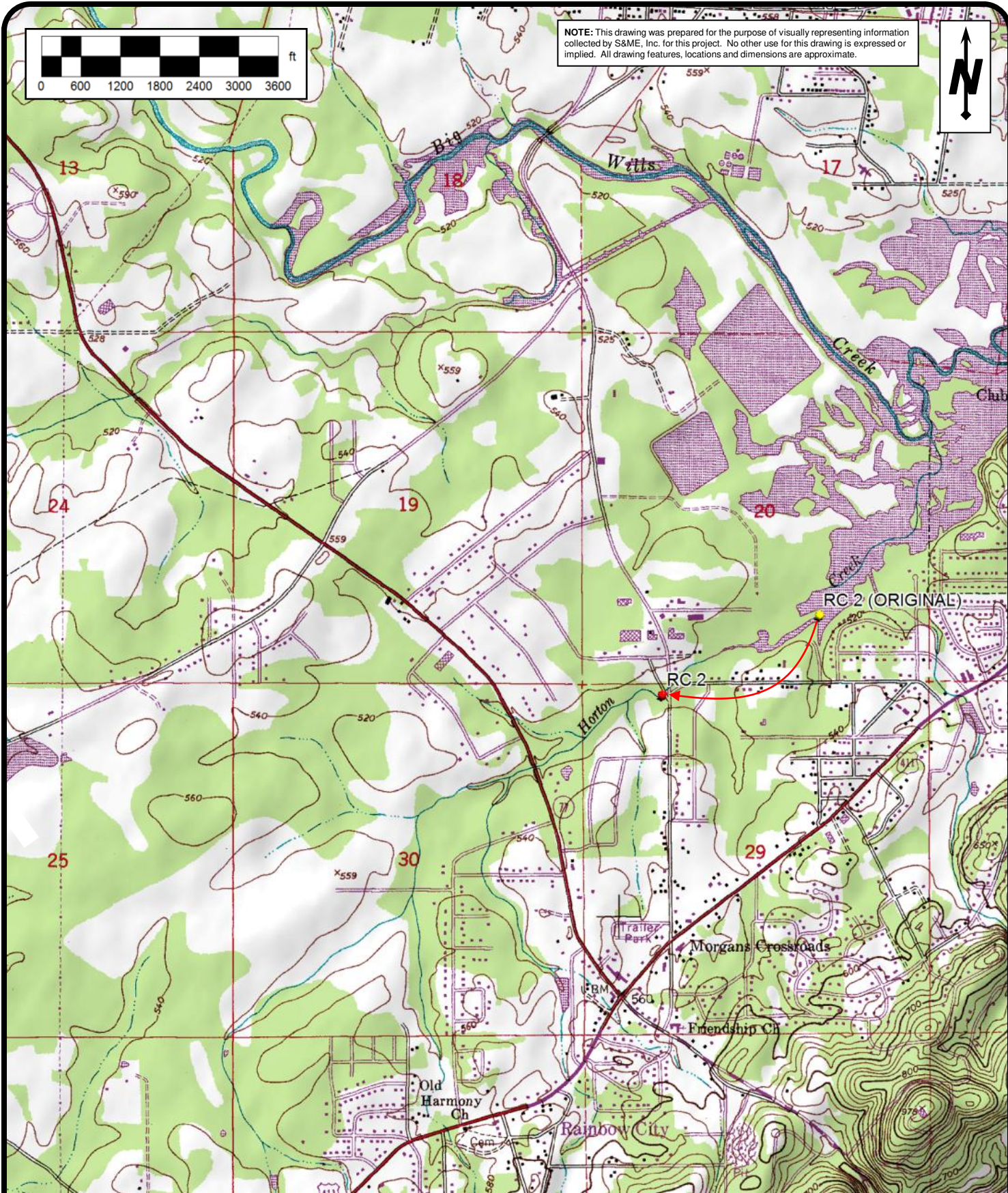
Print Name and Title



## **APPENDIX A – MONITORING RELOCATION MAPS**



NOTE: This drawing was prepared for the purpose of visually representing information collected by S&ME, Inc. for this project. No other use for this drawing is expressed or implied. All drawing features, locations and dimensions are approximate.

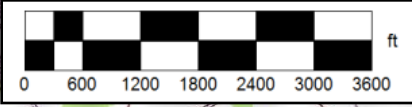


399 EXECUTIVE DRIVE, HUNTSVILLE, ALABAMA 35816  
 PHONE (256) 837-8882 / FAX (256) 837-6931

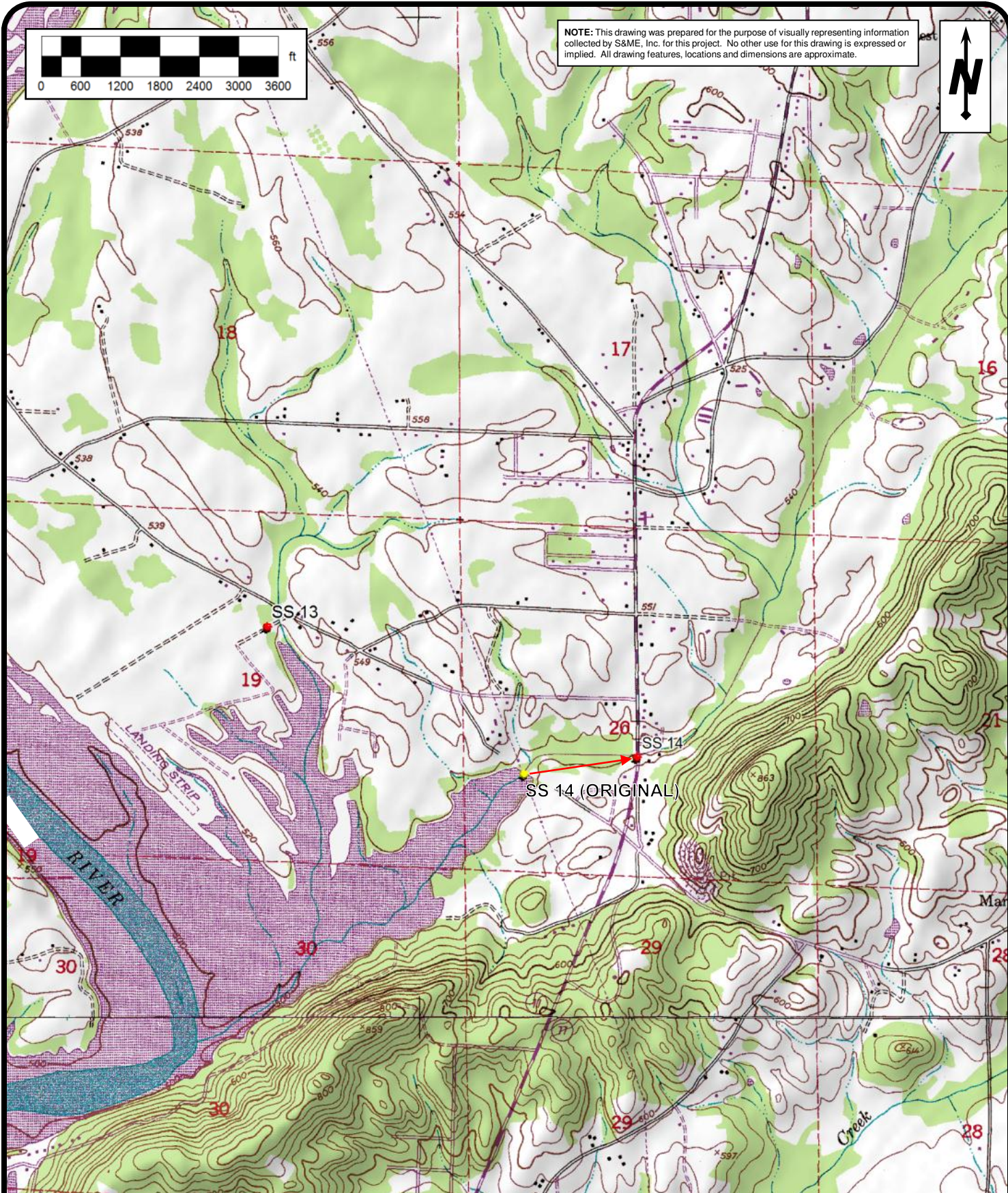
**MONITORING POINT RELOCATION MAP**

MONITORING POINT RC 2  
 GADSDEN-ETOWAH MS4  
 ETOWAH COUNTY, ALABAMA  
 S&ME PROJECT NO. 1824-13-021  
 NPDES PERMIT NO. ALR04-0009

SOURCE: TOPO NORTH AMERICA 9.0  
 SCALE: AS SHOWN  
 RC 2 LAT: 33.967683°  
 RC 2 LONG: -86.039476°



NOTE: This drawing was prepared for the purpose of visually representing information collected by S&ME, Inc. for this project. No other use for this drawing is expressed or implied. All drawing features, locations and dimensions are approximate.

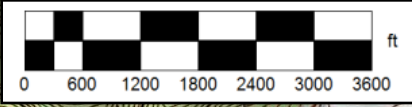


399 EXECUTIVE DRIVE, HUNTSVILLE, ALABAMA 35816  
PHONE (256) 837-8882 / FAX (256) 837-6931

**MONITORING POINT RELOCATION MAP**

MONITORING POINT SS 14  
GADSDEN-ETOWAH MS4  
ETOWAH COUNTY, ALABAMA  
S&ME PROJECT NO. 1824-13-021  
NPDES PERMIT NO. ALR04-0009

SOURCE: TOPO NORTH AMERICA 9.0  
SCALE: AS SHOWN  
SS 14 LAT: 33.885921°  
SS 14 LONG: -86.030683°



NOTE: This drawing was prepared for the purpose of visually representing information collected by S&ME, Inc. for this project. No other use for this drawing is expressed or implied. All drawing features, locations and dimensions are approximate.



399 EXECUTIVE DRIVE, HUNTSVILLE, ALABAMA 35816  
 PHONE (256) 837-8882 / FAX (256) 837-6931

**MONITORING POINT RELOCATION MAP**

MONITORING POINTS GD 12 AND CO 14

GADSDEN-ETOWAH MS4  
 ETOWAH COUNTY, ALABAMA

S&ME PROJECT NO. 1824-13-021

NPDES PERMIT NO. ALR04-0009

SOURCE: TOPO NORTH AMERICA 9.0

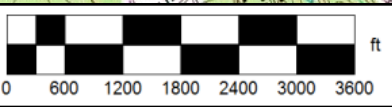
SCALE: AS SHOWN

GD 12 LAT: 33.952567°

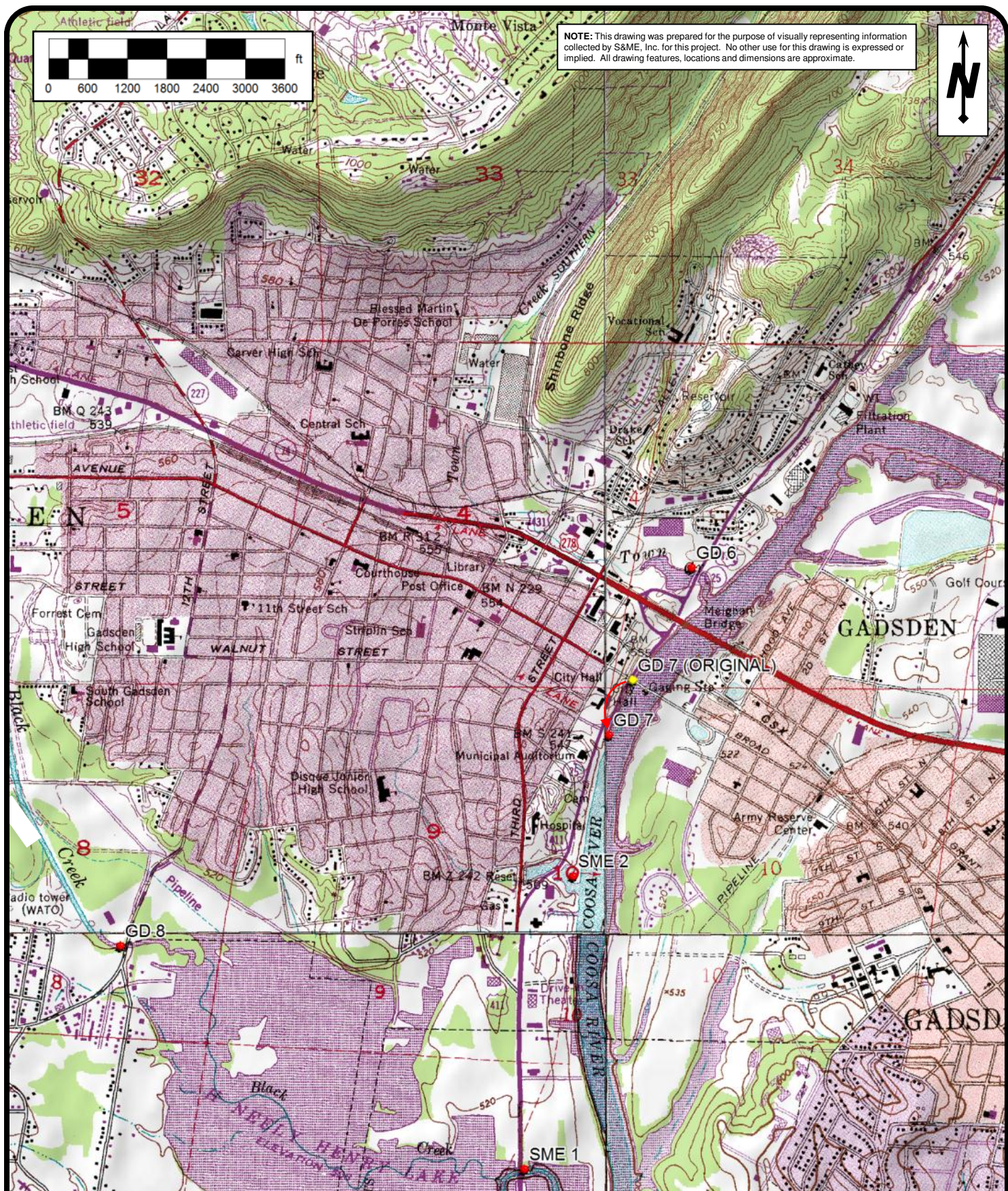
GD 12 LONG: -86.003495°

CO 14 LAT: 33.940904°

CO 14 LONG: -85.967704°



NOTE: This drawing was prepared for the purpose of visually representing information collected by S&ME, Inc. for this project. No other use for this drawing is expressed or implied. All drawing features, locations and dimensions are approximate.



399 EXECUTIVE DRIVE, HUNTSVILLE, ALABAMA 35816  
PHONE (256) 837-8882 / FAX (256) 837-6931

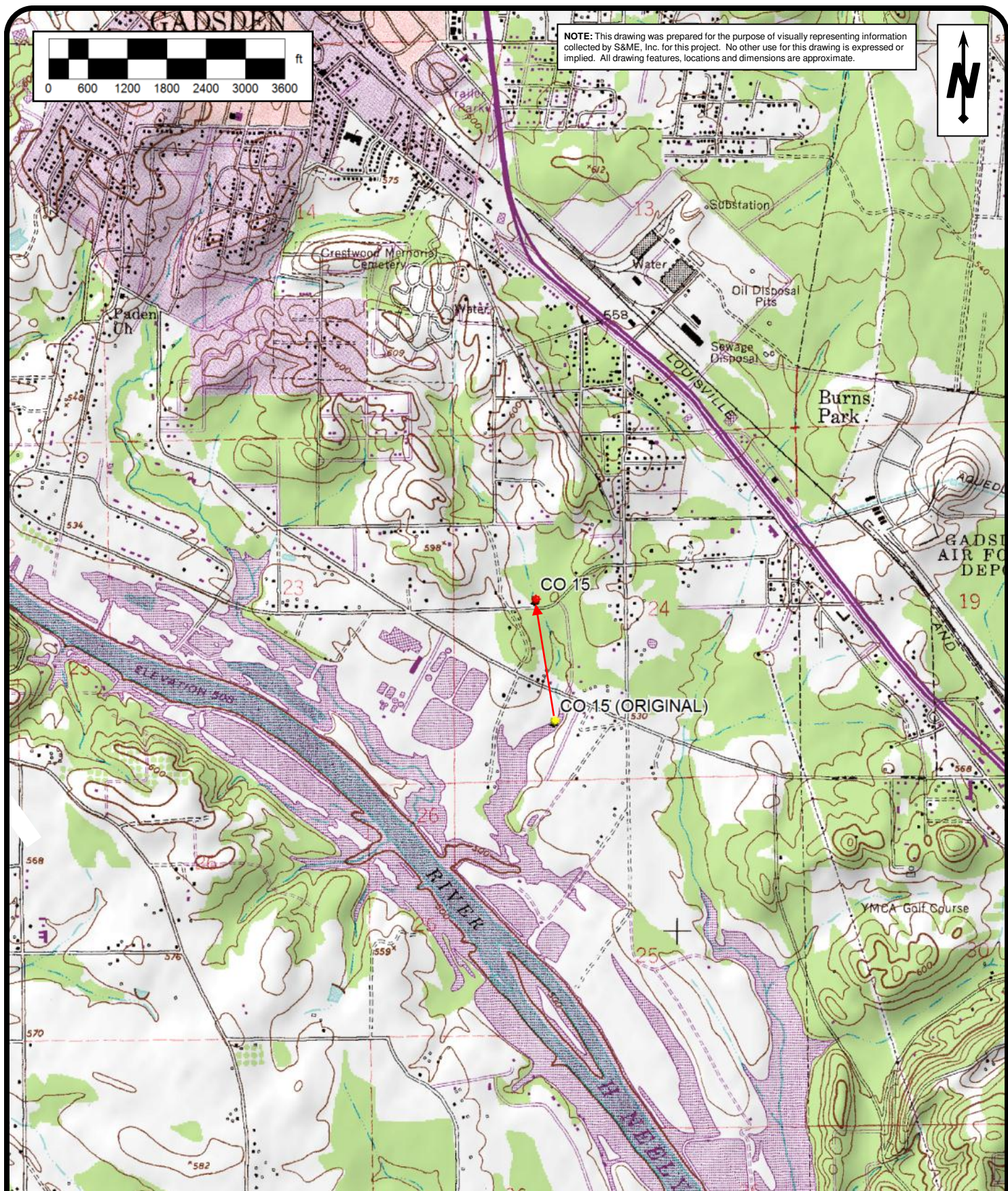
**MONITORING POINT RELOCATION MAP**

MONITORING POINT GD 7  
GADSDEN-ETOWAH MS4  
ETOWAH COUNTY, ALABAMA  
S&ME PROJECT NO. 1824-13-021  
NPDES PERMIT NO. ALR04-0009

SOURCE: TOPO NORTH AMERICA 9.0  
SCALE: AS SHOWN  
GD 7 LAT: 34.008361°  
GD 7 LONG: -85.999777°



NOTE: This drawing was prepared for the purpose of visually representing information collected by S&ME, Inc. for this project. No other use for this drawing is expressed or implied. All drawing features, locations and dimensions are approximate.

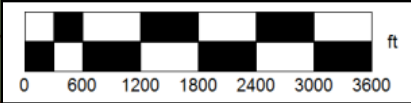


399 EXECUTIVE DRIVE, HUNTSVILLE, ALABAMA 35816  
PHONE (256) 837-8882 / FAX (256) 837-6931

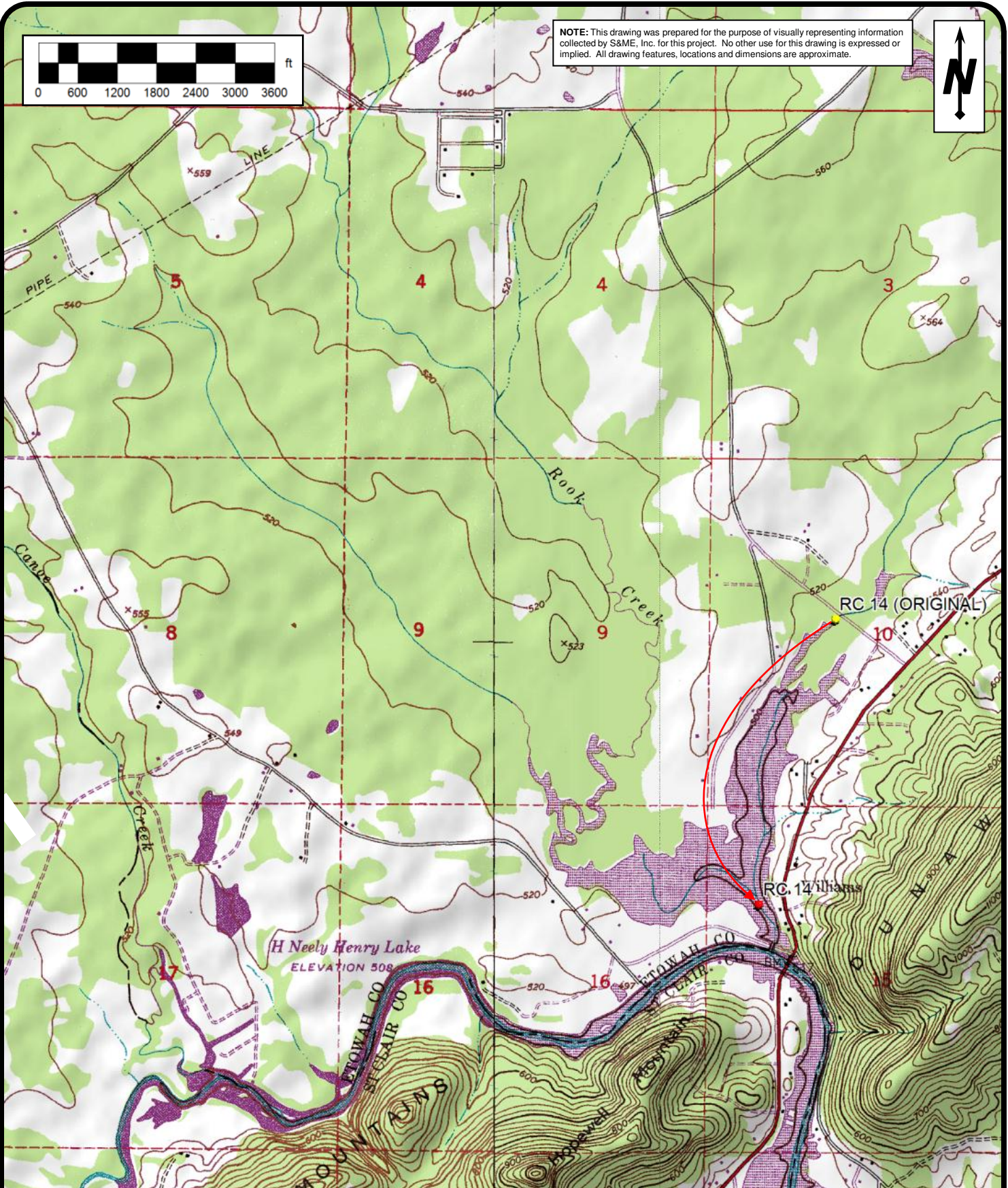
**MONITORING POINT RELOCATION MAP**

MONITORING POINT CO 15  
GADSDEN-ETOWAH MS4  
ETOWAH COUNTY, ALABAMA  
S&ME PROJECT NO. 1824-13-021  
NPDES PERMIT NO. ALR04-0009

SOURCE: TOPO NORTH AMERICA 9.0  
SCALE: AS SHOWN  
CO 15 LAT: 33.972280°  
CO 15 LONG: -85.965354°



**NOTE:** This drawing was prepared for the purpose of visually representing information collected by S&ME, Inc. for this project. No other use for this drawing is expressed or implied. All drawing features, locations and dimensions are approximate.



399 EXECUTIVE DRIVE, HUNTSVILLE, ALABAMA 35816  
 PHONE (256) 837-8882 / FAX (256) 837-6931

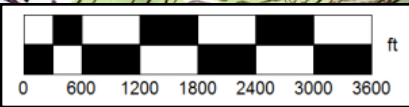
**MONITORING POINT RELOCATION MAP**

MONITORING POINT RC 14  
 GADSDEN-ETOWAH MS4  
 ETOWAH COUNTY, ALABAMA

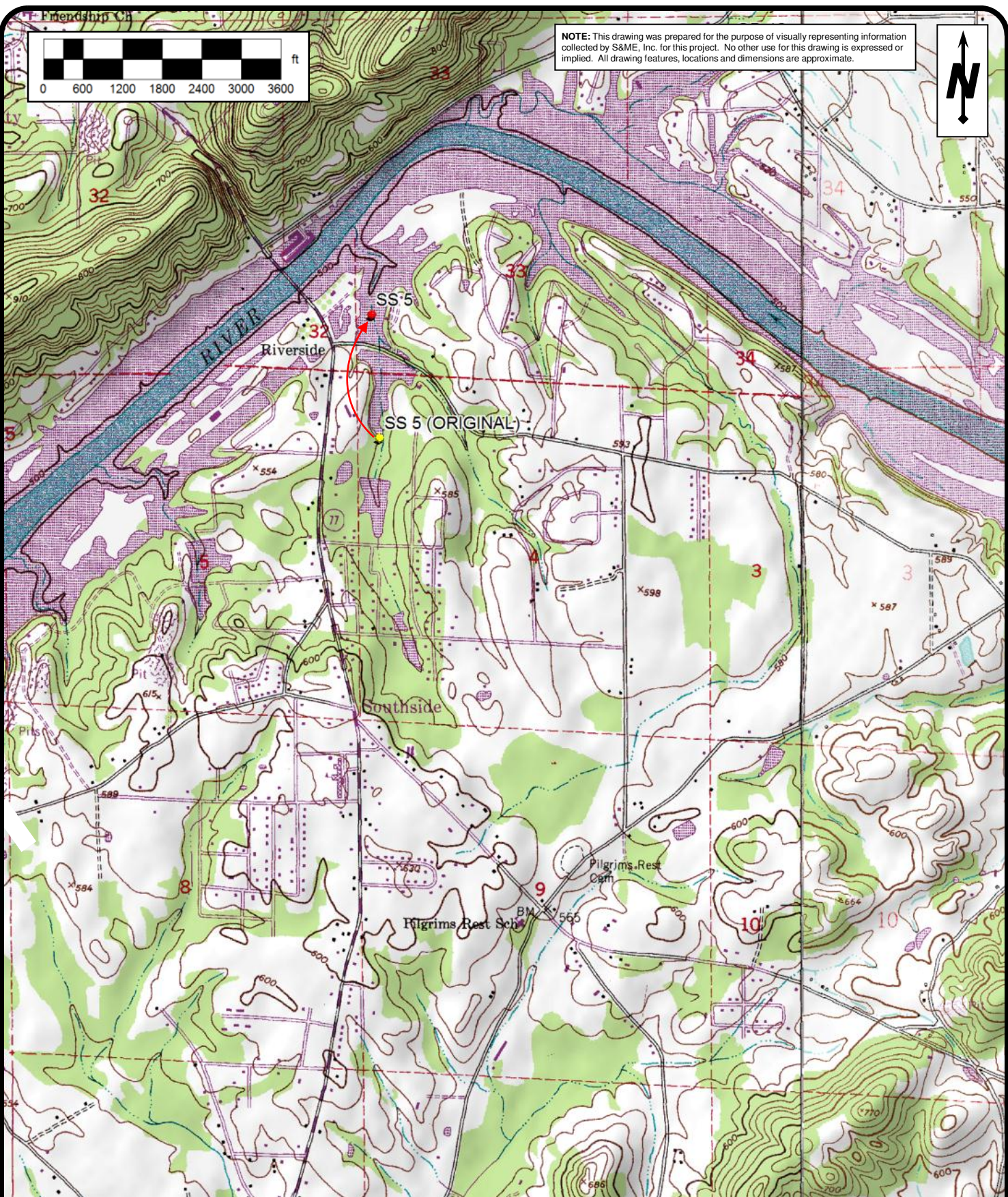
S&ME PROJECT NO. 1824-13-021  
 NPDES PERMIT NO. ALR04-0009

SOURCE: TOPO NORTH AMERICA 9.0  
 SCALE: AS SHOWN  
 RC 14 LAT: 33.905786°  
 RC 14 LONG: -86.111656°

Friendship, CA



**NOTE:** This drawing was prepared for the purpose of visually representing information collected by S&ME, Inc. for this project. No other use for this drawing is expressed or implied. All drawing features, locations and dimensions are approximate.



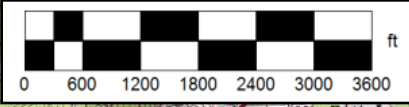
399 EXECUTIVE DRIVE, HUNTSVILLE, ALABAMA 35816  
PHONE (256) 837-8882 / FAX (256) 837-6931

**MONITORING POINT RELOCATION MAP**

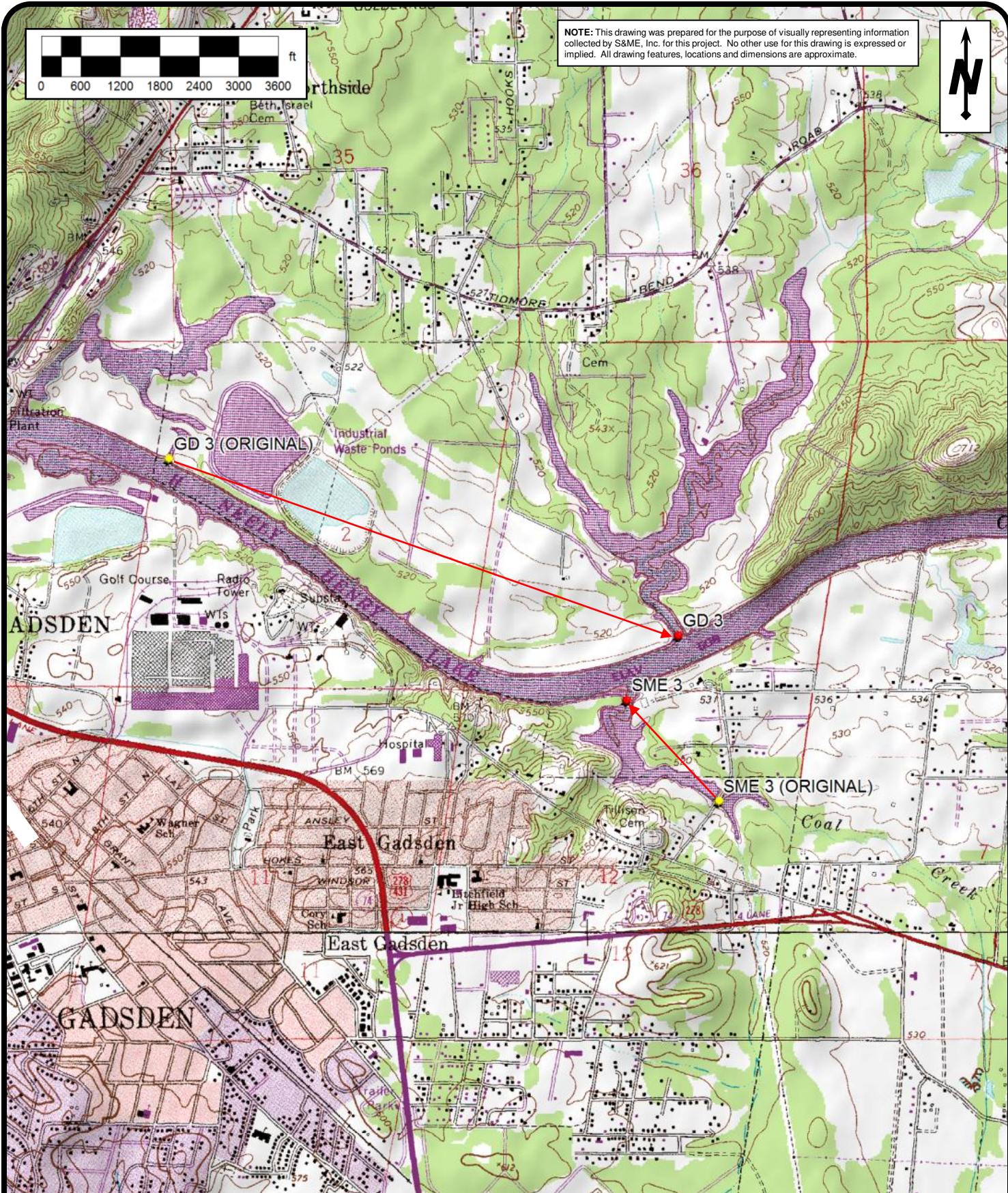
MONITORING POINT SS 5  
GADSDEN-ETOWAH MS4  
ETOWAH COUNTY, ALABAMA  
S&ME PROJECT NO. 1824-13-021  
NPDES PERMIT NO. ALR04-0009

SOURCE: TOPO NORTH AMERICA 9.0  
SCALE: AS SHOWN  
SS 5 LAT: 33.941329°  
SS 5 LONG: -86.021569°





NOTE: This drawing was prepared for the purpose of visually representing information collected by S&ME, Inc. for this project. No other use for this drawing is expressed or implied. All drawing features, locations and dimensions are approximate.



399 EXECUTIVE DRIVE, HUNTSVILLE, ALABAMA 35816  
 PHONE (256) 837-8882 / FAX (256) 837-6931

**MONITORING POINT RELOCATION MAP**

MONITORING POINTS GD 3 AND SME 3

GADSDEN-ETOWAH MS4  
 ETOWAH COUNTY, ALABAMA

S&ME PROJECT NO. 1824-13-021

NPDES PERMIT NO. ALR04-0009

SOURCE: TOPO NORTH AMERICA 9.0

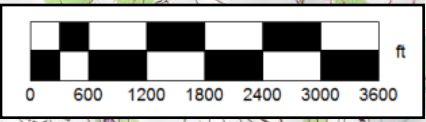
SCALE: AS SHOWN

GD 3 LAT: 34.012380°

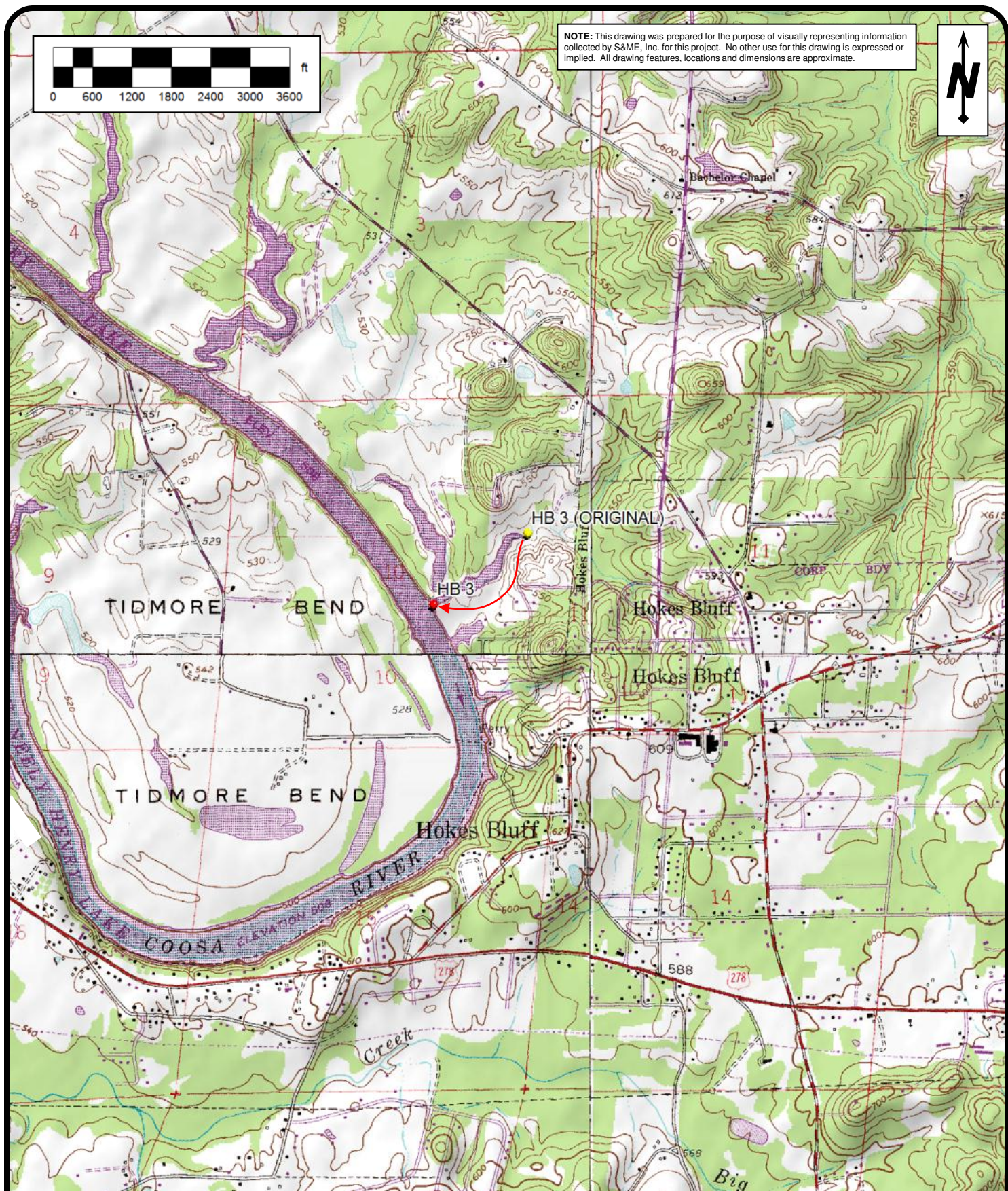
GD 3 LONG: -85.953651°

SME 3 LAT: 34.009698°

SME 3 LONG: -85.956230°



NOTE: This drawing was prepared for the purpose of visually representing information collected by S&ME, Inc. for this project. No other use for this drawing is expressed or implied. All drawing features, locations and dimensions are approximate.



399 EXECUTIVE DRIVE, HUNTSVILLE, ALABAMA 35816  
 PHONE (256) 837-8882 / FAX (256) 837-6931

**MONITORING POINT RELOCATION MAP**  
 MONITORING POINT HB 3  
 GADSDEN-ETOWAH MS4  
 ETOWAH COUNTY, ALABAMA  
 S&ME PROJECT NO. 1824-13-021  
 NPDES PERMIT NO. ALR04-0009

SOURCE: TOPO NORTH AMERICA 9.0  
 SCALE: AS SHOWN  
 HB 3 LAT: 34.002129°  
 HB 3 LONG: -85.882808°